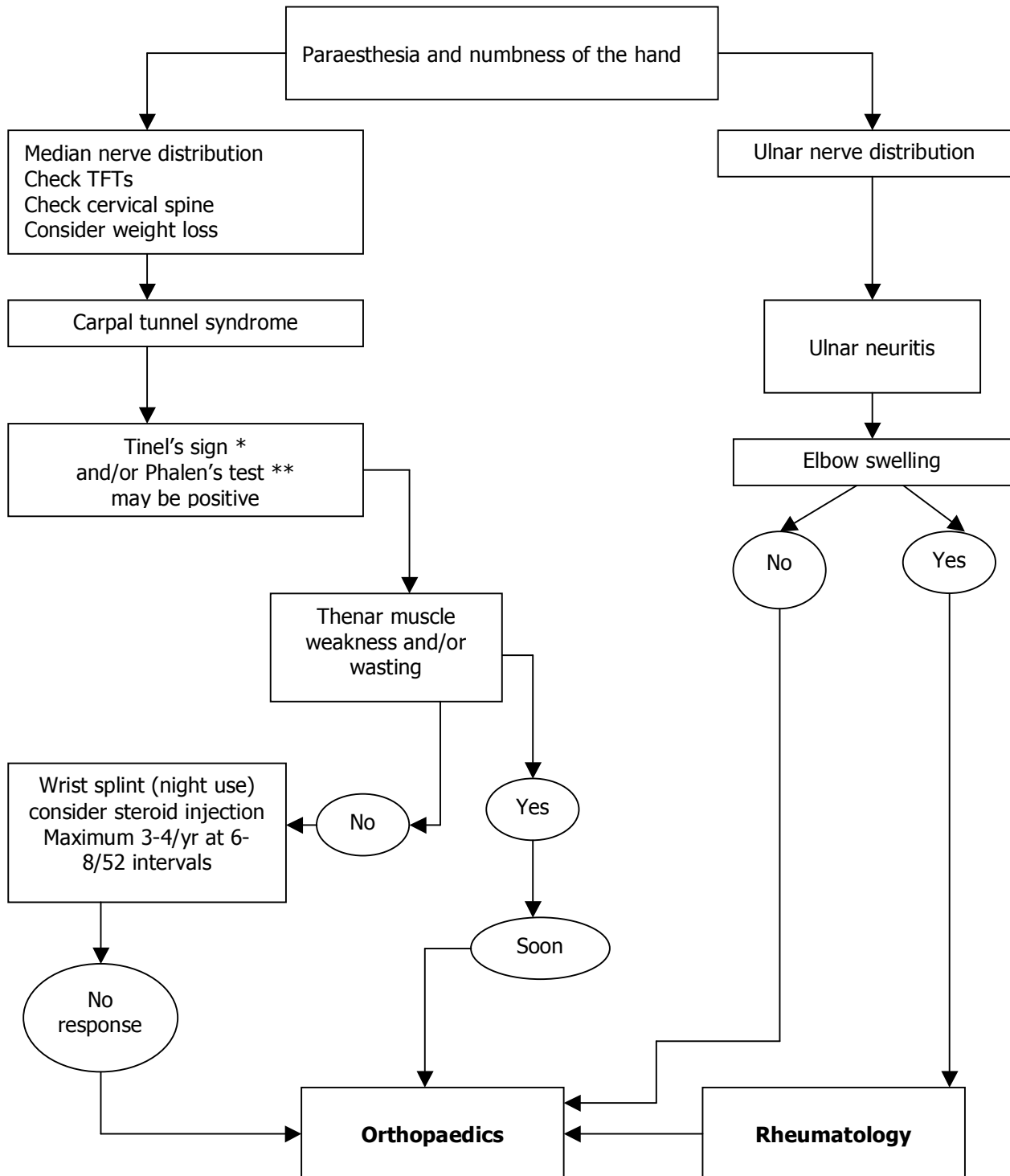


Hand entrapment neuropathy syndromes



*Tinel's sign:

Test positive if symptoms reproduced by percussion over and just proximal to transverse carpal ligament whilst wrist extended.

**Phalen's test:
(wrist flexion test)

Test positive if symptoms reproduced by wrist in maximum unforced flexion for 30 - 60 seconds.

Pressure provocative test:

Test positive if symptoms reproduced by wrist in maximum Flexion with pressure on the volar aspect of the wrist for 30 seconds.